



Ride the wave.

/// High-End Scanners  
made in Germany.

lynn   
imaging

LynnImaging.com • 859.255.1021

 Image  
Access

Product Catalog 2016

 powered by  
Scan2Net®



## World Headquarters

Image Access GmbH  
Hatzfelder Strasse 161-163  
42281 Wuppertal, Germany  
Tel. +49 202 270 580



## U.S. Headquarters

Image Access LP  
765 Duffy Drive  
Crystal Lake, IL 60014 USA  
Tel. +1 (779) 220-4662

For more information, visit us at:

[www.imageaccess.de](http://www.imageaccess.de)  
[www.imageaccess.us](http://www.imageaccess.us)

or scan this code to get there >



©2016 by Image Access GmbH. All rights reserved. Scan2Net®, Scan2Pad®, Bookeye® and WideTEK® are registered trademarks in the United States, Europe and other countries. All other brand names and trademarks are property of their respective owners. All specifications are subject to change without notice.

## Wide Format Flatbed Scanners

WideTEK® 12.....	4
WideTEK® 25.....	5

## Wide Format Sheetfeed Scanners

WideTEK® 36C.....	6
WideTEK® 48C.....	7
WideTEK® 36.....	8
WideTEK® 36 DS.....	9
WideTEK® 44.....	10
WideTEK® 48.....	11

## Wide Format MFP Solutions

WideTEK®-UMFS.....	12
PrintWizard.....	13

## Book Scanners

Bookeye® 4 V3 Kiosk.....	14
Bookeye® 4 V3 Professional.....	15
Bookeye® 4 V2 Basic.....	16
Bookeye® 4 V2 Kiosk.....	17
Bookeye® 4 V2 Office.....	18
Bookeye® 4 V2 Professional.....	19
Bookeye® 4 Professional Archive.....	20
Bookeye® 4 V1A Professional.....	21
Bookeye® 4 V1A-C35.....	22

## Production Software

Scan2Pad®.....	23
Batch Scan Wizard.....	24
Scan2ICC & Scan2iPF.....	25
PerfectStitch.....	26
Opus Free Flow.....	26
BCS-2.....	27



# WideTEK® 12



- ✓ Fits on any desktop: 31 inch depth, only 5 inches more than the scanning area.
- ✓ Captures 3D surfaces for industrial quality inspection: fabric weaves, patterns and textures, Braille print
- ✓ Two LED lamps with diffusors, no warm up, IR/UV free
- ✓ Large color WVGA touchscreen for simple operation
- ✓ Integrated walk up scanning software
- ✓ One USB port and Scan2USB functionality
- ✓ Automatic crop & deskew, on the fly rotation of images
- ✓ Real time display & modification of images without having to rescan
- ✓ Easy installation via Scan2Net® technology

The WideTEK® 12-600 has all the features and high scanning speed of the WideTEK 25 in a smaller A3+ model at a highly competitive price. WideTEK 12 scans the full bed (19% more than A3, 12.5 x 18.5") at 300dpi color in less than 3 seconds, twice as fast as the closest competition. The revolutionary 3D scanning mode opens new opportunities in printing and industrial inspection markets. 3D scanning captures the texture of surfaces so perfectly that the scan on a screen looks like the real thing.

Scanner Optics	CCD camera, scans in color, grayscale, B&W
Resolution	1200 x 1200 dpi scanner resolution 1200 x 600 dpi optical resolution 9600 x 9600 dpi interpolated (optional)
Document Size	317 x 470mm, 12.5 x 18.5 inches
Fastest Speed	300 dpi, full bed <3 sec.
Color Depth	36 bit color, 12 bit grayscale
Scan output	24 bit color, 8 bit grayscale, bitonal, enhanced half-tone
Output Formats	PDF, PDF/A, Multipage PDF, JPEG, JPEG 2000, PNM, TIFF, TIFF uncompressed, TIFF G4 (CCITT)
Dimensions	222 x 440 x 795 mm, 8.8 x 17.4 x 31.3 inches (H x W x D)
Weight	28 kg (62 lbs.)
Power Consumption	<=0.5 W (Sleep) / 4.8 W (Standby) / 55 W (Ready to scan)

# WideTEK® 25

The WideTEK® 25-600 scans the full bed (DINA2+, 18,5x25") at 300dpi color in less than three seconds— two times faster than the closest competition. With the new WT25-BACKLIGHT option, scan transparent material of all kinds, like X-rays, glass negatives, 35mm microfilm aperture cards, sepias, cutout stencils, and film. The revolutionary 3D scanning mode enables new applications in the printing and industrial inspection markets. The 3D scanning mode captures the texture of surfaces so perfectly that the scan on a screen looks like the real thing.



Scanner Optics	CCD camera, scans in color, grayscale, B&W
Resolution	1200 x 1200 dpi scanner resolution 1200 x 600 dpi optical resolution 9600 x 9600 dpi interpolated (optional)
Document Size	635 x 470mm, 25 x 18.5 inches
Fastest Speed	300 dpi, full bed <3 sec
Color Depth	36 bit color, 12 bit grayscale
Scan output	24 bit color, 8 bit grayscale, bitonal, enhanced half-tone
Output Formats	PDF, PDF/A, Multipage PDF, JPEG, JPEG 2000, PNM, TIFF, TIFF uncompressed, TIFF G4 (CCITT)
Dimensions	222 x 760 x 795 mm, 8.8 x 30 x 31.3 inches (H x W x D)
Weight	45 kg (100 lbs.)
Power Consumption	<=0.5 W (Sleep) / 4.8 W (Standby) / 55 W (Ready to scan)

- ✓ Fits on any desktop: 30 inch width, only 5 inches more than the scanning area.
- ✓ Captures 3D surfaces for industrial quality inspection: material weaves, patterns and textures, Braille print
- ✓ **NEW!** Optional backlight unit to scan transparent material
- ✓ Two LED lamps with diffusors, no warm up, IR/UV free
- ✓ Large color WVGA touchscreen for simple operation
- ✓ Integrated walk up scanning software
- ✓ Two USB ports and Scan2USB functionality
- ✓ Automatic crop & deskew, on the fly rotation of images
- ✓ Real time display & modification of images without having to rescan
- ✓ Easy installation via Scan2Net® technology

# WideTEK® 36C



- ✓ Face up scanning with on the fly rotation and modification of images without rescanning. Automated crop & deskew.
- ✓ LED lamps, no warm up, IR/UV free
- ✓ Large color WVGA touchscreen for simple operation
- ✓ Integrated walk up scanning software
- ✓ Two USB ports and Scan2USB functionality
- ✓ **NEW!** Touchscreen enhanced versions of ScanWizard, PrintWizard and EasyScan
- ✓ LED illumination, sturdy steel document scanning bed
- ✓ Fastest scan in color: 15 inches/second at 200 dpi, full width
- ✓ Easy installation via Scan2Net® technology

WideTEK® 36C is the fastest 36 inch CIS scanner on the market, running at 10 inches per second at 300 dpi in color, 2.5 inches per second at 600 dpi in color and 1.9 inches per second at 1200 dpi in color. Grayscale and binary speeds are doubled, but limited to 10 inches per second to ensure safe paper handling. WideTEK® 36C is a true standalone system, capable of scanning directly to FTP servers, USB drives, cloud applications or copying to plotters directly, without the need for an extra PC.

Scanner Optics	CIS camera, scans in color, grayscale, B&W
Resolution	1200 x 1200 dpi scanner resolution 1200 x 600 dpi optical resolution 9600 x 9600 dpi interpolated (optional)
Document Size	965 mm, 38 inch width, nearly unlimited length
Fastest Speed	22.9 m/min, 15 inch/sec at 200 dpi
Color Depth	36 bit color, 12 bit grayscale
Scan output	24 bit color, 8 bit grayscale, bitonal, enhanced half-tone
Output Formats	PDF, PDF/A, Multipage PDF, JPEG, JPEG 2000, PNM, TIFF, TIFF uncompressed, TIFF G4 (CCITT)
Dimensions	195 x 1100 x 410 mm, 7.7 x 43.3 x 16.1 inches (H x W x D)
Weight	30 kg (66 lbs.)
Power Consumption	<=0.5 W (Sleep) / 4.8 W (Standby) / 55 W (Ready to scan)

# WideTEK® 48C

The WideTEK® 48C is the fastest 48 inch CIS scanner on the market, running at 10 inches per second at 300 dpi in color, 2.5 inches per second at 600 dpi in color and 1.9 inches per second at 1200 dpi in color. Grayscale and binary speeds are doubled, but limited to 10 inches per second to ensure safe paper handling. WideTEK® 48C is a true standalone system, capable of scanning directly to FTP servers, USB drives, cloud applications or copying to plotters directly, without the need for an extra PC.



Scanner Optics	CIS camera, scans in color, grayscale, B&W
Resolution	1200 x 1200 dpi scanner resolution 1200 x 600 dpi optical resolution 9600 x 9600 dpi interpolated (optional)
Document Size	1270 mm, 50 inch width, nearly unlimited length
Fastest Speed	22.9 m/min, 15 inch/sec at 200 dpi
Color Depth	36 bit color, 12 bit grayscale
Scan output	24 bit color, 8 bit grayscale, bitonal, enhanced half-tone
Output Formats	PDF, PDF/A, Multipage PDF, JPEG, JPEG 2000, PNM, TIFF, TIFF uncompressed, TIFF G4 (CCITT)
Dimensions	195 x 1430 x 410 mm, 7.7 x 56.3 x 16.1 inches (H x W x D)
Weight	36 kg (80 lbs.)
Power Consumption	<=0.5 W (Sleep) / 4.8 W (Standby) / 55 W (Ready to scan)

- ✓ Face up scanning with on the fly rotation and modification of images without rescanning. Automated crop & deskew.
- ✓ LED lamps, no warm up, IR/UV free
- ✓ Real time display of images and modification without rescanning
- ✓ Integrated walk up scanning software
- ✓ **NEW!** Touchscreen enhanced versions of ScanWizard, PrintWizard and EasyScan
- ✓ LED illumination, sturdy steel document scanning bed
- ✓ Large color WVGA touchscreen for simplified operation
- ✓ Fastest scan at 200 dpi in color: 22.9 m/min (15 inch/sec)
- ✓ Easy installation via Scan2Net® technology

# WideTEK® 36



- ✓ Face up scanning with on the fly rotation and modification of images without rescanning. Automated crop & deskew.
- ✓ Scans 36 inch widths, feeds 38 inch widths, nearly unlimited lengths (scans in „endless mode“)
- ✓ Real time display of images and modification, no rescanning
- ✓ Fastest color scanning at 200 dpi, 14.2 inches per second
- ✓ **NEW!** Touchscreen enhanced versions of ScanWizard, PrintWizard and EasyScan
- ✓ Dust-free camera technology, LED illumination, sturdy steel document scanning bed
- ✓ Large color WVGA touchscreen for simplified operation
- ✓ Easy installation via Scan2Net® technology

WideTEK® 36 scans documents up to 36 inches wide (915mm). State of the art illumination using bright white LEDs guarantees long lifetime and allow low cost of ownership, since there are practically no consumables necessary over the life of the product. Cutting edge camera technology and a dust-protected, fully sealed camera box holding CCD systems which use a patented stitching procedure, delivers a resolution of up to 1200 dpi optical. A recently developed user exchangeable black or white background drum never touches the glass plate.

Scanner Optics	CCD camera, scans in color, grayscale, B&W
Resolution	1200 x 1200 dpi scanner resolution 1200 x 600 dpi optical resolution 9600 x 9600 dpi interpolated (optional)
Document Size	950 mm, 37.4 inch width feed, nearly unlimited length (scans in „endless mode“). Scans 36 inch widths.
Fastest Speed	200 dpi – 21.6 m/min (14.2 inch/sec)
Color Depth	36 bit color, 12 bit grayscale
Scan output	24 bit color, 8 bit grayscale, bitonal, enhanced half-tone
Output Formats	PDF, PDF/A, Multipage PDF, JPEG, JPEG 2000, PNM, TIFF, TIFF uncompressed, TIFF G4 (CCITT)
Dimensions	228 x 1095 x 507 mm , 9 x 43.1 x 20 inches (H x W x D)
Weight	41 kg (90 lbs.)
Power Consumption	<=0.5 W (Sleep) / 4.8 W (Standby) / 55 W (Ready to scan)



WideTEK® 36DS is the world's first and only wide format duplex scanner for digitizing double sided printed documents up to 36 inches (915 mm) wide. At 300 dpi optical resolution, the scanner needs only 2.5 seconds to scan the front and back of a newspaper page in a single pass through the scanner. The scanner has two camera boxes, each holding three CCD systems. After scanning, software separates the scan into four single images; capturing the left and right half of the front and back of the newspaper - everything in one single step.

Scanner Optics	CCD camera, scans in color, grayscale, B&W
Resolution	1200 x 1200 dpi scanner resolution 1200 x 600 dpi optical resolution
Document Size	965 mm, 38 inch width, nearly unlimited length. Scans 36 inch widths.
Fastest Speed	200 dpi – 18.9 m/min (12.4 inch/sec)
Color Depth	36 bit color, 12 bit grayscale
Scan output	24 bit color, 8 bit grayscale, bitonal, enhanced half-tone
Output Formats	PDF, PDF/A, Multipage PDF, JPEG, JPEG 2000, PNM, TIFF, TIFF uncompressed, TIFF G4 (CCITT)
Dimensions	220 x 1094 x 685 mm, 9 x 43 x 27 inches (H x W x D)
Weight	64 kg (141 lbs.)
Power Consumption	0.1 W (Sleep) / 8 W (Standby) / 200 W (Scanning)

# WideTEK® 36DS



- ✓ Scans double sided documents up to 36 inches wide in a single pass, 1200 x 1200 dpi scanner resolution
- ✓ 2.5 seconds at 300 dpi for front and back sides of a newspaper page
- ✓ Twice the scanning power for volume applications
- ✓ Software splits double sided scans into 4 images
- ✓ Fastest color scanning, 12.4 inches per second
- ✓ LED lamps, no warm up, IR/UV free
- ✓ Walk up scanning via touchscreen for simple operation
- ✓ Easy installation via Scan2Net® technology

# WideTEK® 44



- ✓ Face up scanning with on the fly rotation and modification of images without rescanning. Automated crop & deskew.
- ✓ For high resolution scans up to 44 inches (1118 mm) in width, 1200 x 1200 dpi scanner resolution
- ✓ Real time display of images and modification, no rescanning
- ✓ Fastest color scanning, 12.1 inches per second at 200 dpi
- ✓ **NEW!** Touchscreen enhanced versions of ScanWizard, PrintWizard and EasyScan
- ✓ Dust-free camera technology, LED illumination, sturdy steel document scanning bed
- ✓ Large color WVGA touchscreen for simplified operation
- ✓ Standalone device with its own integrated PC
- ✓ Easy installation via Scan2Net® technology

The WideTEK® 44 wide format CCD scanner scans documents up to 44 inches wide (1118 mm) astonishingly fast. Bright white LED illumination ensures long lifetime and best scan results. The WideTEK 44 gently scans due to special transport rollers that serve as pressure points ensuring safe document transport without tearing the paper. The new background drum does not touch the glass plate at any time, avoiding scratches and document skews. For extra contrast on sepias and film based documents, the standard black drum can be easily exchanged with a white drum, with no tools required.

Scanner Optics	CCD camera, scans in color, grayscale, B&W
Resolution	1200 x 1200 dpi scanner resolution 1200 x 600 dpi optical resolution 9600 x 9600 dpi interpolated (optional)
Document Size	1270 mm, 50 inch width, 44 inch scan width, nearly unlimited length (scans in „endless mode“).
Fastest Speed	200 dpi - 18.4 m/min (12.1 inch/sec)
Color Depth	36 bit color, 12 bit grayscale
Scan output	24 bit color, 8 bit grayscale, bitonal, enhanced half-tone
Output Formats	PDF, PDF/A, Multipage PDF, JPEG, JPEG 2000, PNM, TIFF, TIFF uncompressed, TIFF G4 (CCITT)
Dimensions	228 x 1425 x 507 mm, 9 x 56.1 x 20 inches (H x W x D)
Weight	53 kg (117lbs.)
Power Consumption	0.5 W (Sleep) / 4.8 W (Standby) / 86 W (Scanning)

# WideTEK® 48

The WideTEK® 48 wide format CCD scanner scans up to 48 inch (1220 mm) wide documents astonishingly fast. Bright white LED illumination ensures a long lifetime and best scan results. The WideTEK 48 gently scans due to special transport rollers that serve as pressure points ensuring safe document transport. The new background drum does not touch the glass plate at any time, avoiding scratches and document skews. For extra contrast on sepias and film based documents, the standard black drum can be easily exchanged with a white drum, with no tools required.

Scanner Optics	CCD camera, scans in color, grayscale, B&W
Resolution	1200 x 1200 dpi scanner resolution 1200 x 600 dpi optical resolution 9600 x 9600 dpi interpolated (optional)
Document Size	1270 mm, 50 inch width, 48 inch scan width, nearly unlimited length
Fastest Speed	200 dpi - 18.4 m/min (12.1 inch/sec)
Color Depth	36 bit color, 12 bit grayscale
Scan output	24 bit color, 8 bit grayscale, bitonal, enhanced half-tone
Output Formats	PDF, PDF/A, Multipage PDF, JPEG, JPEG 2000, PNM, TIFF, TIFF uncompressed, TIFF G4 (CCITT)
Dimensions	228 x 1425 x 507 mm, 9 x 56.1 x 20 inches (H x W x D)
Weight	53 kg (117 lbs.)
Power Consumption	<0.5 W (Sleep) / 4.8 W (Standby) / 86 W (Scanning)



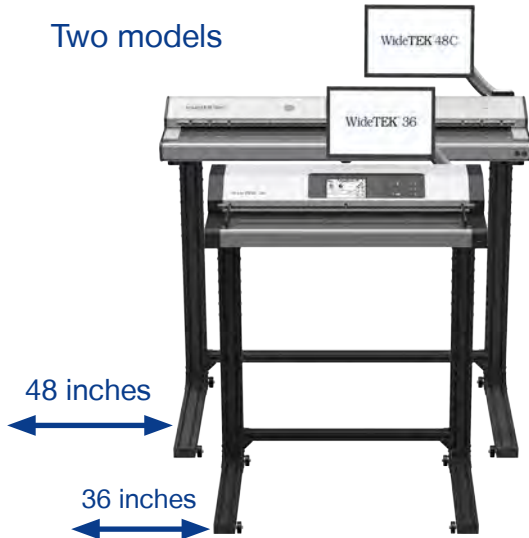
- ✓ Face up scanning with on the fly rotation and modification of images without rescanning. Automated crop & deskew.
- ✓ For high resolution scans up to 48 inches (1220 mm) in width, 1200 x 1200 dpi scanner resolution
- ✓ Real time display of images and modification, no rescanning
- ✓ Fastest color scanning, 12.1 inches per second
- ✓ **NEW!** Touchscreen enhanced versions of ScanWizard, PrintWizard and EasyScan
- ✓ Dust-free camera technology, LED illumination, sturdy steel document scanning bed
- ✓ Large color WVGA touchscreen for simplified operation
- ✓ Standalone device with its own integrated PC
- ✓ Easy installation via Scan2Net® technology

# WideTEK®-UMFS

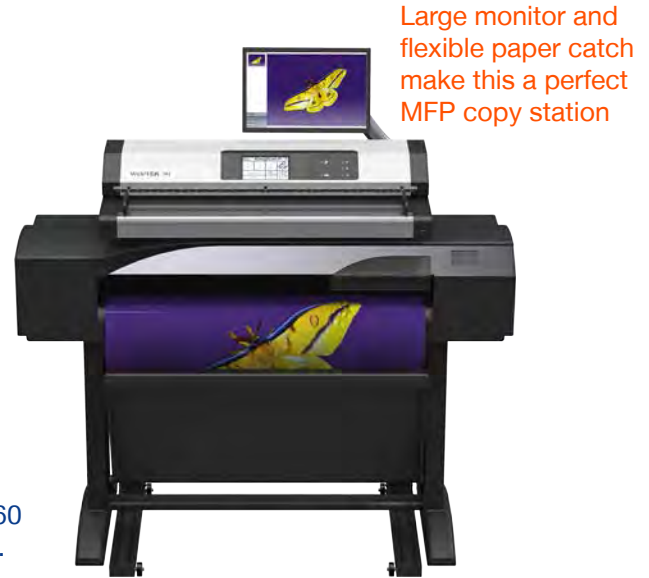
The WideTEK®-UMFS universal multifunction stand is the most versatile and sturdy MFP stand in the industry. Due to its unique „C“ shaped design and adjustable heights, it supports nearly all printers on the market up to 60 inches. There are two models, one for 36“ scanners and one for 48“ scanners. The stand supports both CIS and CCD type scanners. A large monitor with an adjustable arm is included and can be located on the side or over the scanner, wherever it is more convenient.

- ✓ Most versatile MFP stand in the industry
- ✓ Adjustable height for printers up to 60 inches high
- ✓ Fast copy to Canon iPF and Océ plotters
- ✓ Two models: 36 inch model fits WideTEK 36 and WideTEK 36C
- ✓ 48 inch model fits WideTEK 44, WideTEK 48 and WideTEK 48C
- ✓ Large monitor included with the stand
- ✓ No extra PC required, minimal footprint

Two models



Adjustable height up to 60 inches for larger printers.



## Fully Featured Wide Format MFP Solution with No Compromises

PrintWizard converts every WideTEK® scanner to a powerful MFP system by adding the printer of your choice. The PrintWizard is an extension to the ScanWizard and adds print and copy functionality to it. PrintWizard maintains full control of all features of the attached printer, even paper properties or the level of available ink are visible without having to physically access the printer.

### Templates

ScanWizard and PrintWizard each have five predefined scanner and printer templates which help the less experienced user to pick the right settings. The settings defined by the templates as well as their names can be changed and new templates can be added to suit other applications.

### Copy Button

The copy button is also freely configurable and allows a single button copy function, using any one of the templates. This makes copying a set of large documents a simple task for everyone.

### ScanWizard

ScanWizard is the control center of the scanner and runs on the built in 64bit Linux PC, making an external PC obsolete. It is operated through the 22" external touch screen but can also be accessed by any web browser via the scanner's IP address. ScanWizard functionality includes:

- Automatic document width and position detection
- Crop and deskew operation even on long documents
- Virtual rescan to change scanning parameters on the fly without physically scanning again.
- Sending images to USB, SMB, FTP or in the network



**Turn any WideTEK scanner into a powerful MFP solution**

### Ready to go MFP Bundles, Just add a Printer

	Width 36" (914mm)	Width 48" (1220mm)
CIS	WT36C-600-BDL-CN	WT48C-600-BDL-CN
CCD	WT36-600-BDL-CN	WT48-600-BDL-CN

### What's in the Box:

- Scanner with power supply and network cable
- Floor stand with paper catch and foot pedal
- Document return guides
- White background drum (CCD models only)
- 22" touchscreen with adjustable arm
- License key for Océ, imagePROGRAF, Batch Scan Wizard

# Bookeye® 4

V3 Kiosk



- ✓ Color book scanner for formats up to A3+
- ✓ V-shaped book cradle 120 - 180 degrees
- ✓ Bookfold correction, automatic finger & thumb removal, auto crop & deskew and anti-reflection mode
- ✓ Large color WVGA touchscreen, 1 x USB 3.0 port
- ✓ Scan2USB-Walk up scanning to USB, Scan2Print-output to any connected printer, Scan2Network-output to any network connected drive, Scan2FTP, Scan2Mail
- ✓ Scan2Pad/Scan2Mobile—Wireless operation & storage for Android/iOS (iPhone, iPad)
- ✓ Integrated billing module
- ✓ Digital color balance, integrated ICC profile
- ✓ Easy installation via Scan2Net® technology

Bookeye® 4 V3 Kiosk is a true scanner solution, not just a digicam mounted on an expensive frame. It was designed specifically as a self service book scanner / copier for formats 40 % larger than A3 (15.4 x 18.9 inches). With all features of the A2+ model, the Bookeye 4 V3 Kiosk is perfect for offices, libraries, copy shops or other self service environments. Bookeye 4 V3 Kiosk is so small that it can be set up on any desktop in minutes. With the fully configurable touchscreen, the user interface can be precisely matched to customer requirements (and to their corporate identity). The scanner can easily be upgraded to the professional version.

Scanner Optics	CCD camera, scans in color, grayscale, B&W
Resolution	400 x 400 dpi scanner resolution
Document Size	390 x 480 mm (15.4 x 18.9 inches) > A3
Fastest Speed	A3+ @ 150 dpi: 0.8 sec
Color Depth	36 bit color, 12 bit grayscale
Scan output	24 bit color, 8 bit grayscale, bitonal, enhanced half-tone
Output Formats	PDF, PDF/A, Multipage PDF, JPEG, PNM, TIFF, TIFF uncompressed, TIFF G4 (CCITT)
Dimensions	780 x 500 x 580mm, 31 x 19.7 x 22.9 inches (H x W x D)
Weight	30 kg (66 lbs.)
Power Consumption	<= 0.5 W (Sleep) / 2.5 W (Standby) / 130 W (Scanning)

Bookeye® 4 V3 Professional is a true scanner solution, not just a digicam mounted on an expensive frame. It was designed specifically as a higher resolution book scanner / copier for formats 40% larger than A3 (15.4 x 18.9 inches). With all features of the A2+ model, the Bookeye 4 V3 Professional is perfect for offices, libraries, or other environments where higher resolution is required. It is so small that it can be set up on any desktop in minutes. With the fully configurable touchscreen, the user interface can be precisely matched to customer requirements (and to their corporate identity).

Scanner Optics	CCD camera, scans in color, grayscale, B&W
Resolution	600 x 600 dpi scanner resolution
Document Size	390 x 480 mm (15.4 x 18.9 inches) > A3
Fastest Speed	300 dpi, full bed <3 sec for A3+ @ 150 dpi: 0.8 sec
Color Depth	36 bit color, 12 bit grayscale
Scan output	24 bit color, 8 bit grayscale, bitonal, enhanced half-tone
Output Formats	PDF, PDF/A, Multipage PDF, JPEG, JPEG 2000, PNM, TIFF, TIFF uncompressed, TIFF G4 (CCITT)
Dimensions	780 x 500 x 580mm, 31 x 19.7 x 22.9 inches (H x W x D)
Weight	30 kg (66 lbs.)
Power Consumption	<= 0.5 W (Sleep) / 2.5 W (Standby) / 130 W (Scanning)

# Bookeye® 4

V3 Professional



- ✓ Color book scanner for formats up to A3+, 600 x 600 dpi
- ✓ V-shaped book cradle 120 - 180 degrees
- ✓ Bookfold correction, automatic finger & thumb removal, auto crop & deskew and anti-reflection mode
- ✓ Large color WVGA touchscreen, 1 x USB 3.0 port
- ✓ Scan2USB-Walk up scanning to USB, Scan2Print-output to any connected printer, Scan2Network-output to any network connected drive, Scan2FTP, Scan2Mail
- ✓ Scan2Pad/Scan2Mobile—Wireless operation & storage for Android/iOS (iPhone, iPad)
- ✓ Open client interface for BSW, BCS-2, Opus FreeFlow, optional TWAIN interface
- ✓ Easy installation via Scan2Net® technology

# Bookeye® 4

V2 Basic



- ✓ Overhead book scanner for formats up to A2+, 400 x 400 dpi scanner resolution
- ✓ V-shaped book cradle 120 - 180 degrees
- ✓ Large color WVGA touchscreen, 2 x USB ports
- ✓ Automatic finger & thumb removal, auto crop & deskew
- ✓ Scan2USB-Walk up scanning to USB, Scan2Print-output to any connected printer, Scan2Network-output to any network drive, Scan2FTP, Scan2Mail
- ✓ Easy installation via Scan2Net® technology

Bookeye® 4 V2 Basic is an entry level book scanner but still a full-fledged member of the Bookeye family, for use anywhere where grayscale is enough. Equipped with a standard scanning application available via the large color touchscreen, Bookeye 4 Basic scans magazines, files, folders, loose or bound documents at a scanner resolution of 400 x 400 dpi at high speeds. Images can be stored to a USB disk or sent via eMail, uploaded to an FTP server, printed to any network or connected printer or saved on a network drive. The client interface is optional.

Scanner Optics	CCD camera, scans in grayscale, B&W
Resolution	400 x 400 dpi scanner resolution
Document Size	460 x 620 mm (18 x 24.4 inch) > A2
Fastest Speed	A2+ @ 150 dpi: 1.2 sec
Color Depth	12 bit grayscale
Scan output	8 bit grayscale, bitonal, enhanced halftone
Output Formats	PDF, PDF/A, Multipage PDF, JPEG, PNM, TIFF, TIFF uncompressed, TIFF G4 (CCITT)
Dimensions	780 x 670 x 670 mm, 30.7 x 26.4 x 26.4 inches (H x W x D)
Weight	40,5 kg (90 lbs.)
Power Consumption	<= 0.5 W (Sleep) / 2.5 W (Standby) / 130 W (Scanning)



Bookeye® 4 V2 Kiosk was designed for self-service applications. In libraries, archives and public institutions, Bookeye 4 Kiosk scans to USB, eMail, network, FTP, printer or a mobile device like an iPad or Anrroid tablet using the Scan2Pad® application. The unique book cradle solution lets you digitize bound documents at 400 dpi and A2+ in size, by either lying them flat on the scanning bed or in the V-cradle, at an angle of 120 degrees. A 19 inch preview monitor lets users control image quality and make modifications on the fly.

Scanner Optics	CCD camera, scans in color, grayscale, B&W
Resolution	400 x 400 dpi scanner resolution
Document Size	460 x 620 mm (18 x 24.4 inch) > A2
Fastest Speed	A2+ @ 150 dpi: 1.2 sec
Color Depth	36 bit color, 12 bit grayscale
Scan output	24 bit color, 8 bit grayscale, bitonal, enhanced half-tone
Output Formats	PDF, PDF/A, Multipage PDF, JPEG, PNM, TIFF, TIFF uncompressed, TIFF G4 (CCITT)
Dimensions	780 x 670 x 670 mm, 30.7 x 26.4 x 26.4 inches (H x W x D)
Weight	40,5 kg (90 lbs.)
Power Consumption	<= 0.5 W (Sleep) / 2.5 W (Standby) / 130 W (Scanning)



- ✓ Color book scanner for formats up to A2+
- ✓ V-shaped book cradle 120 - 180 degrees
- ✓ Large color WVGA touchscreen, 2 x USB ports
- ✓ Automatic finger & thumb removal, auto crop & deskew
- ✓ Scan2USB-Walk up scanning to USB, Scan2Print-output to any connected printer, Scan2Network-output to any network drive, Scan2FTP, Scan2Mail
- ✓ Scan2Pad/Scan2Mobile—Wireless operation & storage for Android/iOS (iPhone, iPad)
- ✓ Integrated billing module
- ✓ Digital color balance, integrated ICC profile
- ✓ Easy installation via Scan2Net® technology

# Bookeye® 4

V2 Office



- ✓ Color book scanner for formats up to A2+
- ✓ V-shaped book cradle 120 - 180 degrees
- ✓ Scan2USB-Walk up scanning to USB, Scan2Print-output to any connected printer, Scan2Network-output to any network drive, Scan2FTP, Scan2Mail
- ✓ Fingerprint reader for authentication, multiple user management to define complex workflows
- ✓ Folder mode for scanning complete file folders
- ✓ EMC and Saperion certified
- ✓ Bookfold correction, automatic finger & thumb removal, auto crop & deskew and anti-reflection mode
- ✓ Digital color balance, integrated ICC profile

Bookeye® 4 V2 Office combines the ease of use of a self service kiosk model with the requirements of a modern, integrated departmental book scanner / book copier. It features a large color WVGA touchscreen, an intuitive user interface, user authentication for secure data processing, user profiles for workflow and journaling for job completion checks. The integrated fingerprint sensor allows reliable identification of users and the correct assignment of workflow and consistent logging of system processes. Wireless operation and storage is possible with Scan2Pad/Scan2Mobile for Android/iOS (iPhone, iPad).

Scanner Optics	CCD camera, scans in color, grayscale, B&W
Resolution	400 x 400 dpi scanner resolution
Document Size	460 x 620 mm (18 x 24.4 inch) > A2
Fastest Speed	A2+ @ 150 dpi: 1.2 seconds
Color Depth	36 bit color, 12 bit grayscale
Scan output	24 bit color, 8 bit grayscale, bitonal, enhanced half-tone
Output Formats	PDF, PDF/A, Multipage PDF, JPEG, PNM, TIFF, TIFF uncompressed, TIFF G4 (CCITT)
Dimensions	780 x 670 x 670 mm, 30.7 x 26.4 x 26.4 inches (H x W x D)
Weight	40,5 kg (90 lbs.)
Power Consumption	<= 0.5 W (Sleep) / 2.5 W (Standby) / 130 W (Scanning)

The Bookeye® 4 V2 Professional is a high performance production scanner developed specifically to enable optimal capture for large projects via seamless integration with Batch Scan Wizard, BCS-2, Goobi UCC and Opus FreeFlow capturing solutions. Bookeye 4 V2 Professional meets the toughest requirements within a digitization project. Originals up to A2+ such as books, magazines, folders or bound documents of all types, can be digitized at high speed and a scanner resolution of 600 x 600 dpi using Bookeye 4 V2 Professional.

Scanner Optics	CCD camera, scans in color, grayscale, B&W
Resolution	600 x 600 dpi scanner resolution
Document Size	460 x 620 mm (18 x 24.4 inch) > A2
Fastest Speed	A2+ @ 150 dpi: 1.2 sec
Color Depth	36 bit color, 12 bit grayscale
Scan output	24 bit color, 8 bit grayscale, bitonal, enhanced half-tone
Output Formats	PDF, PDF/A, Multipage PDF, JPEG, JPEG 2000, PNM, TIFF, TIFF uncompressed, TIFF G4 (CCITT)
Dimensions	780 x 670 x 670 mm, 30.7 x 26.4 x 26.4 inches (H x W x D)
Weight	40,5 kg (90 lbs.)
Power Consumption	<= 0.5 W (Sleep) / 2.5 W (Standby) / 130 W (Scanning)

# Bookeye® 4

V2 Professional



- ✓ Color book scanner for formats up to A2+, 600 x 600 dpi
- ✓ V-shaped book cradle 120 - 180 degrees
- ✓ Open client interface for BSW, BCS-2, Opus FreeFlow, optional TWAIN interface
- ✓ Scan2USB-Walk up scanning to USB, Scan2Print-output to any connected printer, Scan2Network-output to any network drive, Scan2FTP, Scan2Mail
- ✓ EMC and Saperion certified
- ✓ Folder mode for scanning complete file folders
- ✓ Bookfold correction, automatic finger & thumb removal, auto crop & deskew and anti-reflection mode
- ✓ Digital color balance, integrated ICC profile
- ✓ Easy installation via Scan2Net® technology

# Bookeye® 4

V2 Pro Archive



- ✓ Color book scanner for formats up to A2+, 600 x 600 dpi
- ✓ V-shaped book cradle 120 - 180 degrees and glass plate 120 degrees, flat glass plate optional
- ✓ Large color WVGA touchscreen, 2 x USB ports
- ✓ Scan2USB-Walk up scanning to USB, Scan2Print-output to any connected printer, Scan2Network-output to any network drive, Scan2FTP, Scan2Mail
- ✓ Bookfold correction, auto crop & deskew and anti-reflection mode
- ✓ Digital color balance, integrated ICC profile
- ✓ Easy installation via Scan2Net® technology

Bookeye® 4 V2 Professional Archive is suitable for digitization projects that require high quality and maximum productivity even in 24/7 operation. Originals up to A2+ in size such as books, magazines, posters, folders or bound documents, can be digitized at high speed and a maximum resolution of 600 dpi. The V-shaped book cradle with V-shaped glass plate enables distortion free scans and protects the book binding. An external monitor is also included. For exact positioning on the bookfold, the glass plate is moved horizontally but can also be removed without requiring any tools or special technical training.

Scanner Optics	CCD camera, scans in color, grayscale, B&W
Resolution	600 x 600 dpi scanner resolution
Document Size	460 x 620 mm (18 x 24.4 inch) > A2
Fastest Speed	A2+ @ 150 dpi: 1.2 seconds
Color Depth	36 bit color, 12 bit grayscale
Scan output	24 bit color, 8 bit grayscale, bitonal, enhanced half-tone
Output Formats	PDF, PDF/A, Multipage PDF, JPEG, JPEG 2000, PNM, TIFF, TIFF uncompressed, TIFF G4 (CCITT)
Dimensions	780 x 670 x 670 mm, 30.7 x 26.4 x 26.4 inches (H x W x D)
Weight	52,5 kg (116 lbs.)
Power Consumption	<= 0.5 W (Sleep) / 2.5 W (Standby) / 130 W (Scanning)

# Bookeye® 4

V1A Professional

The Bookeye® 4 V1A is the world's only A1+ overhead book scanner that accommodates both flat documents with or without the glass plate; as well as large, fragile bound documents, using the protective V-cradle for even more gentle scanning.

Bookeye 4 V1A scans A1+ formats up to 600 dpi resolution and features an automatic book cradle for up to 100 mm height adjustment, a glass plate that opens automatically and of course, the 140° V-cradle.

Scanner Optics	CCD camera, scans in color, grayscale, B&W
Resolution	600 x 600 dpi scanner resolution
Document Size	635 x 850 mm (25 x 33.5 inch) > DIN A1
Fastest Speed	DIN A1+ @ 150 dpi: 1.8 seconds
Color Depth	36 bit color, 12 bit grayscale
Scan output	24 bit color, 8 bit grayscale, bitonal, enhanced half-tone
Output Formats	PDF, PDF/A, Multipage PDF, JPEG, JPEG 2000, PNM, TIFF, TIFF uncompressed, TIFF G4 (CCITT)
Dimensions	1100 x 880 x 855 mm, 43.3 x 34.7 x 33.7 inches (H x W x D)
Weight	77 kg (170 lbs.)
Power Consumption	<= 0.5 W (Sleep) / 2.5 W (Standby) / 130 W (Scanning)



- ✓ Color book scanner for formats up to A1+, 600 x 600 dpi
- ✓ V-shaped book cradle 140 - 180 degrees
- ✓ Large color WVGA touchscreen, 2 x USB ports
- ✓ Open client interface for capturing software solutions
- ✓ Motorized automatic cradle with lift up to 10cm, glass plate perfect for scans in flat mode
- ✓ AUTO mode triggers automatic scanning and opens the glass plate after each scan
- ✓ Bookfold correction, automatic finger & thumb removal, auto crop & deskew and anti-reflection mode
- ✓ Digital color balance, integrated ICC profile
- ✓ Easy installation via Scan2Net® technology

# Bookeye® 4

V1A-C35



- ✓ Color book scanner for formats up to A1+, able to scan very thick books with a height of 350mm (or 500mm, optional)
- ✓ Gentle, protective V-shaped cradle 140 - 180 degrees
- ✓ Glass plate for perfect scans, motorized for automatic or semi-automatic scanning
- ✓ Open client interface for capturing software solutions
- ✓ Scan2PDF - create PDF/A formatted output
- ✓ Bookfold correction, automatic finger & thumb removal, auto crop & deskew and anti-reflection mode
- ✓ Digital color balance, integrated ICC profile
- ✓ Easy installation via Scan2Net® technology

Bookeye® 4 V1A-C35 is the professional solution for digitization projects that require high quality images at maximum productivity, while eliminating the strenuous, repetitive tasks required of an operator to get the job done. Bookeye 4 V1A-C35 scans original documents up to A1 in size, with the unique book cradle for books 350mm thick (or optionally 500mm). The motor driven glass plate distinguishes three modes: fixed glass plate, without glass plate and with an adjustable opening angle. In Auto Mode, the scanning process is fully automatic.

Scanner Optics	CCD camera, scans in color, grayscale, B&W
Resolution	600 x 600 dpi scanner resolution
Document Size	635 x 850 mm (25 x 33.5 inch) > A1
Fastest Speed	A1 @ 150 dpi: 1.8 sec
Color Depth	36 bit color, 12 bit grayscale
Scan output	24 bit color, 8 bit grayscale, bitonal, enhanced half-tone
Output Formats	PDF, PDF/A, Multipage PDF, JPEG, JPEG 2000, PNM, TIFF, TIFF uncompressed, TIFF G4 (CCITT)
Dimensions	Book cradle closed: 1700 x 1100 x 960 mm / 67 x 43.3 x 37.8 inch (H x W x D)
Weight	140 kg (309 lbs.)
Power Consumption	33 W (Standby) / 90 W (Ready to Scan, monitor on) / 130 W (Scanning) / <= 230 W (Fully automatic scan cycle)

## Mobile Scanning via Tablet Changes the Way You Work

The Scan2Pad® application allows ImageAccess scanners to be controlled and operated using an iPad or an Android tablet or a smartphone running Android version 3.2 or higher or an iPhone. Experience a new way to work with our book and large format scanners and see how simple it is to configure and operate them using our mobile application Scan2Pad®.

Scan2Pad® is available for the iPad free of charge in the iTunes Store. Look for the App „Scan2Mobile“ or simply search for Bookeye® or WideTEK®. The Android version of Scan2Pad® is available for download from our website.

Scan2Pad® supports all book scanners and book copiers with the brand name Bookeye® as well as all WideTEK® wide format scanners. The latest generation of scanners such as the Bookeye 4, the WideTEK 36 or the flatbed scanner WideTEK 25 can be addressed as separate wireless access points, making them ideal for use with multiple systems in the public domain.

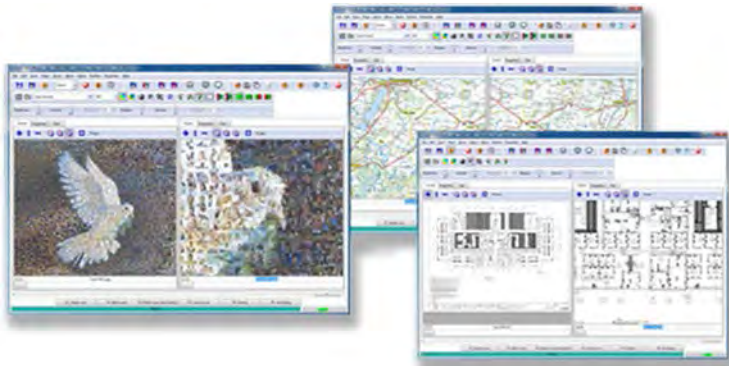


- ✓ Quickly adjust the color depth, from black & white to grayscale or full color
- ✓ Simplified brightness controls
- ✓ Automatic page splitting
- ✓ Single step creation of scanned pages as JPEG and PDF files
- ✓ Print quality copies of scans wirelessly via AirPrint (with iOS & AirPrint enabled printer)
- ✓ Mail directly from the App
- ✓ Upload the PDF to your iBook\* library (\*for iOS)
- ✓ Synchronize scanned documents to the iCloud\* (\*for iOS)
- ✓ Offline processing of scan jobs





# BatchScanWizard



- ✓ Automated scanning of high volume source documents
- ✓ Easy configuration with templates
- ✓ Manage scan parameters in jobs
- ✓ On the fly modification of scanned images
- ✓ Hotkeys - frequently used operations at the press of a key
- ✓ Scan Tool - scan user definable sections of source documents
- ✓ Variable page splitting
- ✓ Time saving, high data throughput, perfect for production
- ✓ Purchase and download from Image Access Customer Service Portal

Batch Scan Wizard allows scanner operators to automate scanning large volumes of documents. The software expedites data throughput and reduces operational tasks substantially. A batch is started either using the foot switch or the user interface of the Batch Scan Wizard.

In addition to standard scan parameters like brightness, contrast, color mode or file format; Batch Scan Wizard offers Scan Tool for predefining regions in a document to extract, scan and save as separate images. A previously scanned document can be modified and the resulting image quality improved without having to rescan.

The operator can configure frequently used functions and operations on hotkeys and activate them with the single press of a key. Even complex operations can be configured for hotkeys.

Batch Scan Wizard is available for purchase and for download online in the Customer Service Portal.



# S2N Scan2iPF



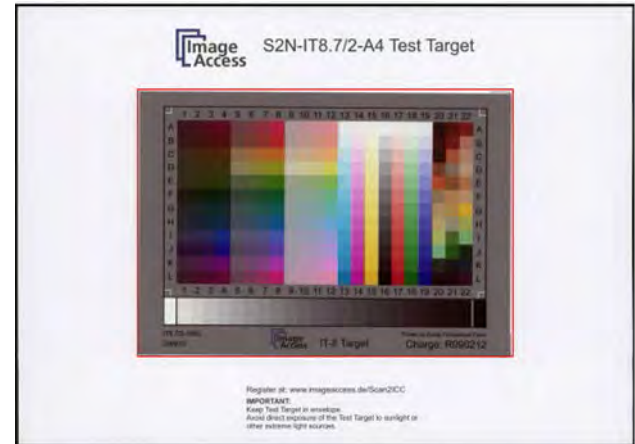
The WideTEK® Scan2iPF printer profile gives scanner and printer operators the ability to print/copy directly to the Canon iPF printer of their choice, including the Canon iPF 650, 655, 710, 720, 750, 755, 760, 765, 810, 815, 820 and 825 printers. Scan2iPF enables a robust, productive multifunction system with scanning speeds matching the output of the iPF printers.

\* See also the PrintWizard MFS Solution on page 13 of this catalog.

- ✓ Fast copy to Canon iPF printers with the Scan2iPF option
- ✓ Scan at 8.5 inches per second (12.7 m/min), matches fastest printer output
- ✓ 1200 x 600 dpi true optical resolution delivers outstanding image quality
- ✓ Perfect for high volume production in reprographics, facilities management
- ✓ Ask your Image Access representative for pricing

# S2N Scan2ICC

Scan2ICC is an online tool for creating and storing an individual ICC profile for a single Scan2Net® scanner. This service is a simple, cost efficient alternative to expensive, complicated third party software.



- ✓ Subscription for individual ICC profile for each Scan2Net® scanner
- ✓ True color output for copy applications
- ✓ Clear and simple operation
- ✓ Cost efficient subscription, available for purchase on the Customer Service Portal or ask for pricing

# PerfectStitch



The Easiest Way to  
Make One Out of Two!

Download your trial version  
from our homepage today!



The PerfectStitch software add-on from Image Access is the easiest to use, most intuitive solution for fast and accurate stitching of two or more JPEG and TIFF images.

The high quality images generated by Image Access scanners can be stitched together perfectly in three simple steps. Double the scan area of your Image Access Scanner with PerfectStitch!



Optimized to work with Bookeye® scanners, OPUS FreeFlow is a high-performance digitization software that can be used „out of the box“ or customized for large digitization projects.



The simple 3-tab interface allows users to switch dynamically between scanning, image treatment, and outputting derivatives. Parallel transmission of images in up to eight output formats including JPEG, TIFF, M-TIFF, PDF (optional) and GIF.



# BCS-2<sup>®</sup>

BCS-2<sup>®</sup> is a solution for digitizing, post-processing and electronic publishing of books, magazines and maps. Using BCS-2<sup>®</sup>, operators can control book scanners, flatbed, sheetfeed and microfilm scanners and copiers. The scan results of the job processes are seamlessly passed into workflow systems.

## Applications

- Electronic document delivery: production of digitized material
- Internet / Intranet publication, access to e-mail systems
- Connection to CMS, DMS, archive and workflow systems

## Order Management

- Integrated Order Management
- Management and export, and (re-) import of jobs
- Configurable profiles
- Editing, printing, and deleting jobs



- ✓ User defined formats, profiles for different styles, batch scanning of large volumes of documents and books
- ✓ Black border removal and deskew
- ✓ Automatic rotation after scanning - zoom, rotate, invert
- ✓ Thumbnails to view all scans in a scan job
- ✓ Format adaptation of different sizes on a target format template
- ✓ Flexible cropping, masking and page splitting
- ✓ MAPI interface for applications such as MS Outlook/Exchange, Lotus Notes, Mozilla Thunderbird, etc.
- ✓ Print jobs for single image, entire orders and printing and scanning in parallel
- ✓ Ask your Image Access representative for pricing

Ride the wave.



Image Access GmbH  
Hatzfelder Str. 161-163  
42281 Wuppertal  
Germany  
[www.imageaccess.de](http://www.imageaccess.de)

Image Access LP  
765 Duffy Drive  
Crystal Lake, IL 60014  
USA  
[www.imageaccess.us](http://www.imageaccess.us)