

# Canon

CANON SOLUTIONS AMERICA



CANON SEE IMPOSSIBLE



lynn  
imaging

LynnImaging.com

859.255.1021

BUILT FOR  
SPEED

EFFORTLESS  
OPERATION

PRODUCTIVE  
ALL-IN-ONE SYSTEM

RELIABLE  
PERFORMANCE

ECOFRIENDLY  
SYSTEM

MONOCHROME  
AND COLOR

FLEXIBLE  
CAPABILITIES

## OCÉ COLORWAVE<sup>®</sup> 500 PRINTING SYSTEM

Productive all-in-one large format system—  
monochrome and color



OCÉ COLORWAVE 500  
PRINTING SYSTEM



A CANON COMPANY

# OCÉ COLORWAVE 500 PRINTING SYSTEM

- One printer for all your monochrome and color needs
- Effortless operation
- Superior finishing options
- Sustainable and ecofriendly system



## OCÉ COLORWAVE 500 PRINTING SYSTEM

### The most productive all-in-one large format system—monochrome and color

Push the boundaries of your large format printing with the Océ ColorWave 500 printing system, a monochrome and color printer, scanner, and copier in one convenient single footprint. Gain a competitive edge with distinctive high-quality drawings and presentations without the need for expensive coated paper. Save on space, supplies, and maintenance by using one system for both color and monochrome work. With its intuitive design, the Océ ColorWave 500 printer is one of the easiest to use walk-up printers.

Like other members of the Océ large format family, this printer works just like a tablet thanks to the Océ ClearConnect user interface. That means your staff will intuitively know how to use it when they see it for the first time. And true to its name, Océ ClearConnect technology makes the right connections to get the job done. Print on the way to your next meeting or from a job site. Keep work moving even when you can't get to the printer.

### One printer for all your monochrome and color needs

The Océ ColorWave 500 printer has all the advantages of our proven award-winning Océ CrystalPoint® technology in one compact system. Ideal for both small workgroups squeezed for space or central operations that want to

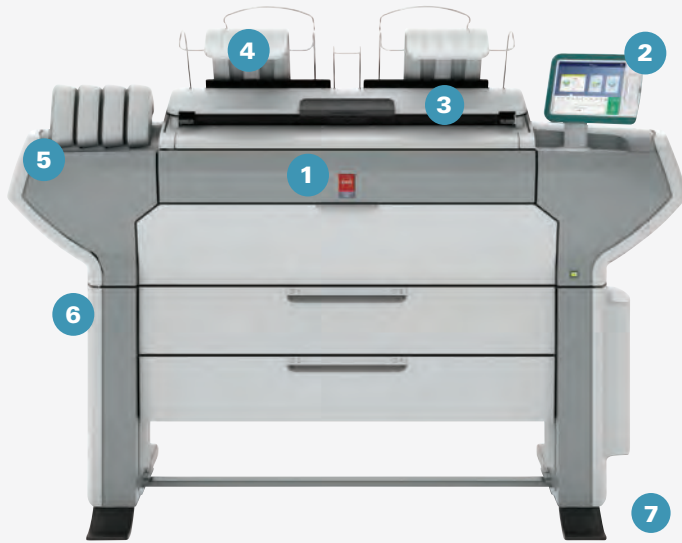
add a productive large format system. Built for speed, you can print, copy, and scan at the same time—without sacrificing productivity or quality. Easily process large and complex files with the Océ ColorWave 500 printer. You can handle monochrome and color—CAD, GIS, and full-color graphics on different kinds of uncoated media such as recycled paper as well as Tyvek for tear resistant prints.

Produce up to 225 D-size monochrome and color prints per hour—to meet a rush deadline without breaking a sweat. This system can hold up to four media rolls and prints come out dry, cut-to-size, and ready to use. With the optional integrated folder, different folded packages can be prepared and printed right from your desktop.

The Océ patented Océ CrystalPoint technology ensures robust, waterfast prints with sharp lines, high readability of fine details, and smooth, even area fills. The high-quality prints are consistent over time on different machines and have a unique silk-shine look and feel, independent of the type of media you use.

### Effortless Operation

Help your staff spend more time on what's important and less time handling documents with the Océ ColorWave 500 system—one of the fastest and easiest printers you will find. Our Automatic Print Assistant automatically selects the print mode, image position, and best fit media roll to save time. Print on up to four rolls of media to produce



**1 THE MOST PRODUCTIVE ALL-IN-ONE LARGE FORMAT SYSTEM**

Save on space, supplies, and maintenance by using one system for both color and monochrome work. With its intuitive design, this engine is one of the easiest to use in the industry today.

**2 EFFORTLESS OPERATION WITH THE OCÉ CLEARCONNECT PANEL**

The Océ ClearConnect panel works like a tablet. Easily control the printer with your fingertips using simple and familiar screen movements. Swipe, spread, and zoom in on details. Check that documents are correctly positioned using the live preview to avoid errors.

**3 SUPERIOR COLOR COPYING AND SCANNING**

Océ Color Image Logic technology automatically compensates for wrinkles and light colors to produce superior results. Originals are inserted face-up and paper width is detected automatically.

**4 NEAT DOCUMENT DELIVERY AND STACKING**

Get neatly collated and stacked documents of up to 75 E-sized prints on the top delivery tray. Sets are neatly stacked on top, ready to go.

**5 RELIABLE PERFORMANCE**

Océ patented Océ CrystalPoint technology ensures robust, waterfast prints with sharp lines, high readability of fine details and smooth area fills. High-quality, consistent prints have a unique silk-shine look and feel, independent of the media used.

**6 SUSTAINABLE AND SECURE SYSTEM**

With Océ CrystalPoint technology, you have the ability to print on recycled medias with high-quality results. The unit emits no ozone, dust or odor. The system is constructed of durable and solid parts and designed to be recycled and re-used.

**7 TIME SAVING WORKFLOW**

This system is designed to make it easier to prepare, produce, and manage complex files ranging from AEC and CAD all the way to large graphic files. Advanced tools make it easy to get documents when and where you need them.

large volumes and sets without interruption. Sets are neatly stacked on top, ready-to-go.

The Océ ClearConnect touchscreen works like a tablet so there is little to no learning curve. The simple layout, intuitive design, and detailed preview functions help users get their prints faster, without errors, even when they are stored in the cloud or have just arrived in an email on their mobile phone. Users can even organize prints in their Personal Smart Inbox to save time.

The Océ ClearConnect software suite also gives you more flexible and effortless ways to submit and manage files. Print from your desktop via Océ Publisher Select™ software to manage complex document sets. You can even print from the cloud, your smartphone or tablet when you are rushing to a meeting. Knowing you can print when you need to, takes some of the stress out of the work day.

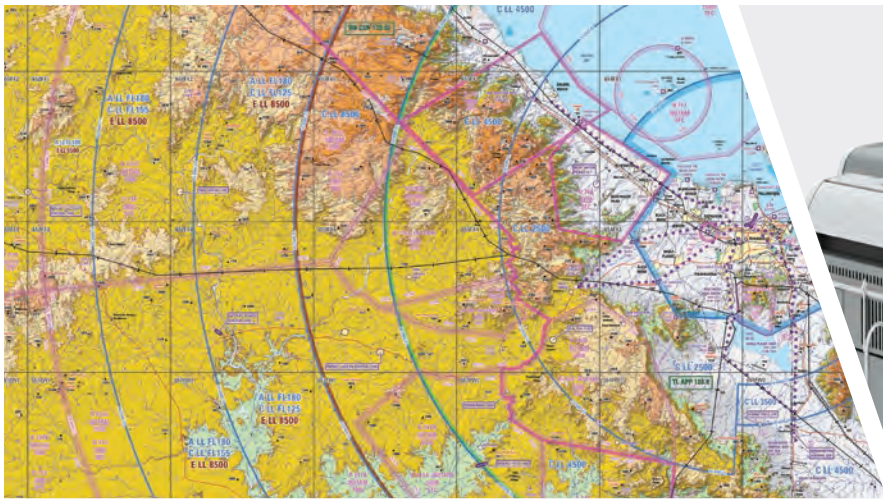
**Sustainable and ecofriendly system**

When you work side-by-side with your printer, you want to know that it's people and planet friendly. The Océ ColorWave 500 printer is designed to create a healthy working environment. The unique Océ TonerPearls® toner ensure that there's no fine dust, no odor, and minimal waste disposal. It can print on recycled and carbon neutral media and has certified de-inking properties.

The Océ ColorWave 500 system is based on proven Océ technology found in thousands of systems worldwide. Constructed of durable and solid parts, you get dependable uptime with fewer jams, shorter downtime, and fewer service calls.



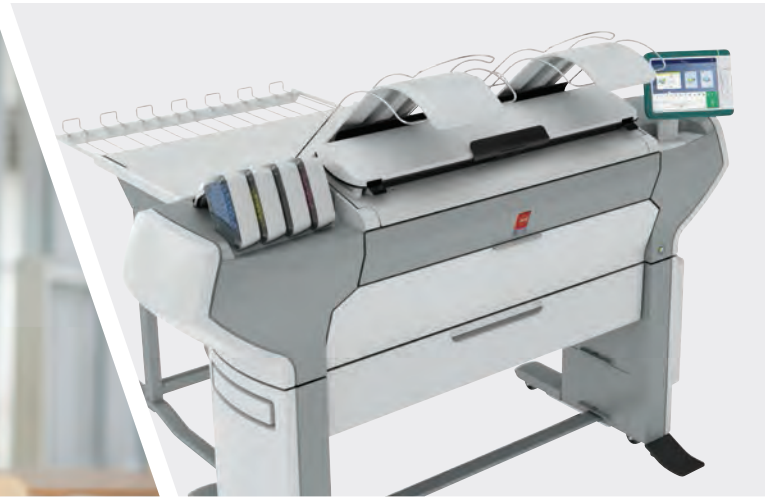
PRINT SYSTEM	
Description	Color and Monochrome printer based on Océ CrystalPoint Technology, 42", Dual Memory Controller, 2 rolls, Océ ClearConnect multi-touch user panel, Océ Top Delivery Tray
Imaging technology	Océ CrystalPoint Technology. Instant dry, waterfast output on uncoated media
Toner/ type	Océ ColorWave 500 TonerPearls toner, Cyan, Magenta, Yellow and Black TonerPearls, 500 gram /color. Clean toner refill, no toner dust, no residue
Print modes	OPA (Océ Print assistant, determines the most suitable print mode automatically based on content file)
Print speed	Monochrome CAD: 225 D-size prints/hour (high speed mode), Color CAD: 212 D-size prints/hour (high speed mode)
Resolution	True resolution: 600 x 600 dpi
Size main engine (WxDxH)	6.89' x 2.95' x 5.18' (2100 x 900 x 1580 mm)
Weight main engine	556 lb. (252 kg) (printer and 1 drawer)
MEDIA HANDLING	
Media capacity	2 or 4 rolls (1 drawer = 2 rolls, 2 drawers = 4 rolls)
Supported rolls	Maximum roll diameter: 7.1" (180 mm) Maximum roll weight: 44 lb. (20 kg) 3" and 2" cores (media on 2" core to the external output not to the TDT) Media untaped on core
Media thickness	200 µm; 8 mil (film: 2.5 – 8 mil)
Media tools	Automatic width detection
Maximum media length	650' (200 m)
Media cutting	Automatic
Media sizes	All widths between 11"-42" (297 mm–1067 mm), including standard sizes DIN, ANSI, ARCH
Media weight	Paper: 16–43 lb. (60–160 g/m <sup>2</sup> ); film: 2.5–4.5 mill
Minimum print length	8.5" (210 mm)
Media type	Uncoated papers, uncoated Tyvek®, self-adhesive papers, blue back papers, polypropylene films, polyester films, light blocks films, soft banner, instant dry photo paper
USER INTERFACE	
Description	Océ ClearConnect multi-touch user panel
Size (WxDxH)	11.8" x 8.7" x 1.6" (300 x 220 x 40 mm); Touch screen: 10.4"
Resolution	800 x 600 pixels
Number of colors	16.2 million
Technology	Projective capacitive touch
Operation	3 hard buttons: [Wake-up], [Stop, interrupt, abort], [Home] Multi-touch functions: tap, double tap, pinch, 2 finger pinch, swipe, flick, and spread
Interface design	IF design award: distinctive user interface with intuitive navigation and clearly defined levels of operation
Features	View optimization: Tilt (-4 to +45 degrees) and turn (-45 to +180 degrees) Status light (red, green) USB 2.0 interface with indication light
Languages	Switch instantly between 2 languages. Select from 21 languages.
CONTROLLER	
Description	Océ POWERsync Controller, with Microsoft Windows 8 embedded, 64 bits
Processor	i3 processor
Memory	8 GB
Video	Intel HD Graphics, 1GHz



CONTROLLER (CONTINUED)	
Hard disk	2 x 500 GB
Interface	Ethernet 100 Mbits/s, 1 Gbit/s TCP/IP: DHCP, IPv4, IPv6, https Discovery: WSD, LPD, NetBios
Page description language	TIFF 6.0, JPEG1.02, HPGL, HPGL2, C4, Calcomp 906/907/951, CALS 1, NIRS, NIFF, PS3/PDF1.7/APPE3 (optional)
Security	E-shredding, IPSec, HTTPS, extended security protection for administrator, audit logging. User authentication on local UI for FTP, SMB, and WebDav. Configure HTTPS Certificates, Removable Hard Drives (optional)
Access management	Provide secure access to device by users by keying in password on the ClearConnect multi-touch operator panel or get access with a Smart Card by connecting a card reader. Authorization is managed by using Active Directory.
Cloud support	Unlimited user and or Administrator authenticated cloud support via WebDav and/or third party provider: e.g. Microsoft Sharepoint®, Dropbox®, Box.com, box.net, Google® Drive®, Microsoft SkyDrive®, Amazon®, Cloudsafe®, MyDisk®, ARC® Collaborate.
Color management	<ul style="list-style-type: none"> <li>• RGB input profile (sRGB, AdobeRGB)</li> <li>• CMYK input profile (Euroscale coated, Euroscale uncoated, US Web coated (SWOP), US Web uncoated, ISOcoated_v2_eci_300.icc, ISOcoated_v2_eci.icc (FOGRA39), PSO Uncoated ISO12647-ECI (FOGRA47), GRACoL2006_Coated1v2.icc, SWOP2006_Coated3v2.icc, SWOP2006_Coated5v2.icc, UncoatedFogra29.icm)</li> <li>• Gray profile (standard included in the PDF/APPE option)</li> <li>• Rendering intent (perceptual, saturation, absolute colorimetric, relative colorimetric)</li> </ul>
Smart inbox	Personal Smart Inboxes for organizing and re-group jobs, reprinting or preview before printing.
SCANNER	
Description	Contact Image Sensor (CIS) Color scanner with Océ Image Logic technology
Scan resolution	600 x 600 dpi
Scan speed	Monochrome: maximum 47.9'/min (14.6 m/min) Color: maximum 15.75'/min (4.8 m/min)
Scan formats	TIFF, PDF, PDF/A, JPEG, CALS, multi-page PDF, multi-page PDF/A and multi-page TIFF
Scan destination	Local USB flash drive, FTP, SMB, Controller, mobile device via Océ Mobile WebTools, WebDav Cloud, Collaborate
Original width	8.2"-36" (208 mm-914 mm); automatic digital width detection
Original length	8.2"-630" (208 mm-16,000 mm); (file type dependent, longer than 629.92" (16,000 mm) for smaller originals), automatic length detection
Original thickness	Maximum 0.03" (0.8 mm); (non-rigid documents)
Zoom	1:1, Scale to media size, Scale to standard format, Custom: 10-1000 %
Preset modes	For scanning and copying
Size scanner (WxDxH)	43" x 12" x 5.5" (1097 x 308 x 140 mm)
Weight scanner	55 lb. (25 kg)
ENVIRONMENTAL	
Sound pressure level	Ready: 36 dB(A), Active: 57 dB(A)
Sound power level	Ready: 4.7 B(A), Active: 6.9 B(A)
Ozone concentration	0
Heat emission	Ready: 214 W, Active: 395 W
Power requirements	100-240 V, 50-60 Hz
Power consumption	Sleep: 2.5W, Ready: 199 W, Active: 380 W
Safety/EMC marks & environmental labels	CE, TÜV GS, CETECOM, c-UL-US, RCM, ENERGY STAR, FEMP, EPEAT?
Recyclables	Printer: made of steel and highly recyclable plastics, min 86% of the engine can either be upcycled or recycled. Toner: cartridge packaging reused as maintenance cassette and made of recyclable plastic. Prints: very good deinkability when recycled.



HIGHLIGHTS OCÉ WORKFLOW SOFTWARE	
Job submission	<p>Create, retrieve and/or send jobs from drivers (Océ Wide Format Printer Driver for Microsoft Windows 2, Océ PostScript 3 driver), external locations (SMB, FTP, LPR, WebDav), Mobile devices via Océ Express WebTools, Océ Publisher Select, Océ Publisher Mobile, USB flash drive, Cloud services.</p> <p>1-click printing from USB, 1-click printing from last send jobs via Print SmartAccess on Océ ClearConnect user panel. The Smart Inbox on the Océ ClearConnect user panel enables the job preview: swipe between your jobs for print selection and preview. Pan to view the image in detail (zoom).</p> <p>Multiple files and originals are supported. Print multiple times, and sort by page or set. Media saving automatically rotates originals to optimize media usage.</p> <p>Full support of Adobe PostScript 3, Adobe PDF Print Engine (APPE 3) and ONYX® software.</p>
Queue management	<p>Spool memory provides a queuing system for print and copy jobs. This enables multiple users to send print and copy jobs at the same time. Customize priority settings for copy and print jobs in the queue.</p> <p>The Job queue overview gives access to job names, owners, and status including required media. Jobs can be paused, deleted, and placed on top of the queue.</p>
Print management	<p>View the counter history at preferred time periods, per job or total overview.</p> <p>View, create, edit, and delete stamp templates.</p>
Device management	<p>Océ Express WebTools provide administrators the tools to manage the device remotely via the web: for example, define default settings for print, copy and scan, define access, security, accounting, power on/off timer, system behavior etc. It also provides live system feedback via the web, very useful for the help desk.</p>
Scan to file	<p>Océ Scanner Express offers full hybrid performance with its scan-to-file functionality. Send files, via SMB, FTP, WebDAV, to various locations such as local drives, personal Smart Inboxes, or the cloud application of your choice.</p> <p>Scan to USB or use Océ Mobile WebTools and Océ Publisher Mobile to scan to mobile devices.</p> <p>Custom scan file naming to any location. Checkplot functionality.</p> <p>Océ ClearConnect supports Live Preview of the scanning process on the user panel.</p> <p>Scan to many formats also Adobe PDF.</p>
Océ ClearConnect	<p>Océ ClearConnect enables a consistent view on your workflow from every possible angle, and job management is made easy. Default jobs can be performed by only clicking the green button (Océ SmartAccess for Print, Scan and Copy). Behavior is customizable via Océ Express WebTools. Edit the most common used job settings for copy, scan, and print jobs. Presets can be defined in Océ Express WebTools.</p> <p>The Smart Inbox supports multi-user environments and 1-click printing via the Océ SmartAccess for all users.</p> <p>The Océ Express WebTools controller application supports customizable workflows. Separate work spaces give you a complete overview and full control over print and scan job management. Tasks you can manage are: Settings and configuration management, Network connectivity management, Queue management, License management, System monitoring, Scan retrieval, Print job submission. You can access the integrated Océ Express WebTools controller application from any networked workstation.</p> <p>Job view to check the printer status, available wherever you are with a single click.</p> <p>Use the Smart Inbox to view all jobs with status, job name, and owner. Actions to print, print all, edit, send to..., delete, and save. Custom sorting of jobs in list or group view.</p> <p>What you see is what you print with WPD 2.</p> <p>Open API for third party or own-developed applications integrated with the Océ ClearConnect user panel.</p> <p>Configurable accounting.</p>
Mobile and Cloud	<p>Print from and scan to the cloud application of your choice. With the help of mobile applications such as Océ Mobile WebTools and Océ Publisher Mobile the printer can be easily accessed and used from any location.</p>



OCÉ WORKFLOW SOFTWARE	
Description	Concurrent print, copy, and scan of single documents or sets.
Printer drivers	Océ Wide Format Printer Driver for Microsoft Windows 2, Océ PostScript 3 driver
Job submission	USB flash drive, Océ Mobile WebTools for iOS, Android and BlackBerry, Océ Publisher Mobile for IOS and Android, Océ Publisher Express, and Océ Publisher Select software.
Job management	Personalized Smart Inbox with history, Manage queue, Manage history, Océ Express WebTools, Secured controller access
Accounting	Option: Océ Account Center
Device management	Remote device management and with Océ Express WebTools: secured controller access, remote shutdown and restart, define default setting, define system behavior.
GENERAL	
Media capacity upgrade (optional)	Additional 2 roll media drawer, increases media capacity from 1,312' to 2,624' (400 m to 800 m)
Stacking systems (standard)	Integrated Top Delivery Tray, 75 sheets capacity.
Océ ClearConnect multi-touch user interface (standard)	Consistent look and feel from every angle of your workflow, standard including Océ Smart Inbox and Océ SmartAccess and Océ Live Preview.
Productive scanning system (optional)	Océ Scanner Express with Océ Image Logic® technology.
Workflow software (standard)	Océ Wide format Printer Driver for Microsoft Windows 2, Océ PostScript® 3 driver, Océ Mobile WebTools for iOS®, Android® and BlackBerry®, Océ Publisher Mobile for IOS and Android, Océ Publisher Express®, Océ Publisher Select
Adobe workflow (optional)	Adobe PostScript 3/PDF/APPE file interpreter
Folding systems (optional)	Océ 2400 FanFold Océ 4300 FullFold series
Stacking Systems (optional)	Océ Delivery Tray, 150 sheets capacity. Increase delivery capacity up to 225 pages.
Workflow software (optional)	Océ View Station, Adobe PostScript 3/PDF/APPE file interpreter, Océ Account Center, Océ Remote Service.

# WHY CANON SOLUTIONS AMERICA.

Canon Solutions America recommends forward-thinking strategies to achieve the highest levels of information management efficiency for your unique business needs. Using superior technology and innovative services, we then design, implement, and track solutions that improve information flow throughout your organization in environmentally conscious ways, resulting in greater productivity and reduced costs.

**There are many reasons why you should choose Canon Solutions America as your provider for document management solutions. Benefits include:**

- A Canon U.S.A. Company
- Business Services
- Professional Services
- Global Capabilities
- Certified Training and Support
- Flexible Finance Options
- Single-Source Solutions Provider
- Managed Document Services
- Nationwide Coverage
- Customized Industry Solutions
- Genuine Canon and Océ Parts and Supplies
- Diverse Range of Input-to-Output Technology

But that's not all. As a company that is dedicated to your needs, we support our solutions with highly skilled professionals and advanced diagnostic systems to maintain peak performance. And with ongoing consultation, we can further your document management capabilities to ensure the highest level of satisfaction and productivity.



CANON SOLUTIONS AMERICA

**LARGE FORMAT SOLUTIONS**  
100 PARK BLVD., ITASCA, IL 60143

1-800-714-4427 | 1-630-250-6550  
us.info@csa.canon.com **CSA.CANON.COM**

Canon is a registered trademark of Canon Inc. in the United States and elsewhere. "Océ" is a trademark or registered trademark of Océ-Technologies B.V. in the United States and elsewhere. Océ ColorWave, Océ CrystalPoint, Océ TonerPearls, Océ Image Logic, and Océ Publisher Express are registered trademarks of Océ-Technologies B.V. in the United States and elsewhere. Océ Publisher Select is a trademark of Océ-Technologies B.V. in the United States and elsewhere. ONYX is a registered trademarks of ONYX Graphics Inc. in the United States and elsewhere. All other referenced product names and marks are trademarks of their respective owners and are hereby acknowledged. The absence of product or service mark names and logos anywhere in the text does not constitute a waiver of any trademark or other intellectual property rights pertaining to that name, mark or logo.

© 2015 Canon Solutions America, Inc. All rights reserved.

LFS-51322 DS 4/15 CC1/PDF